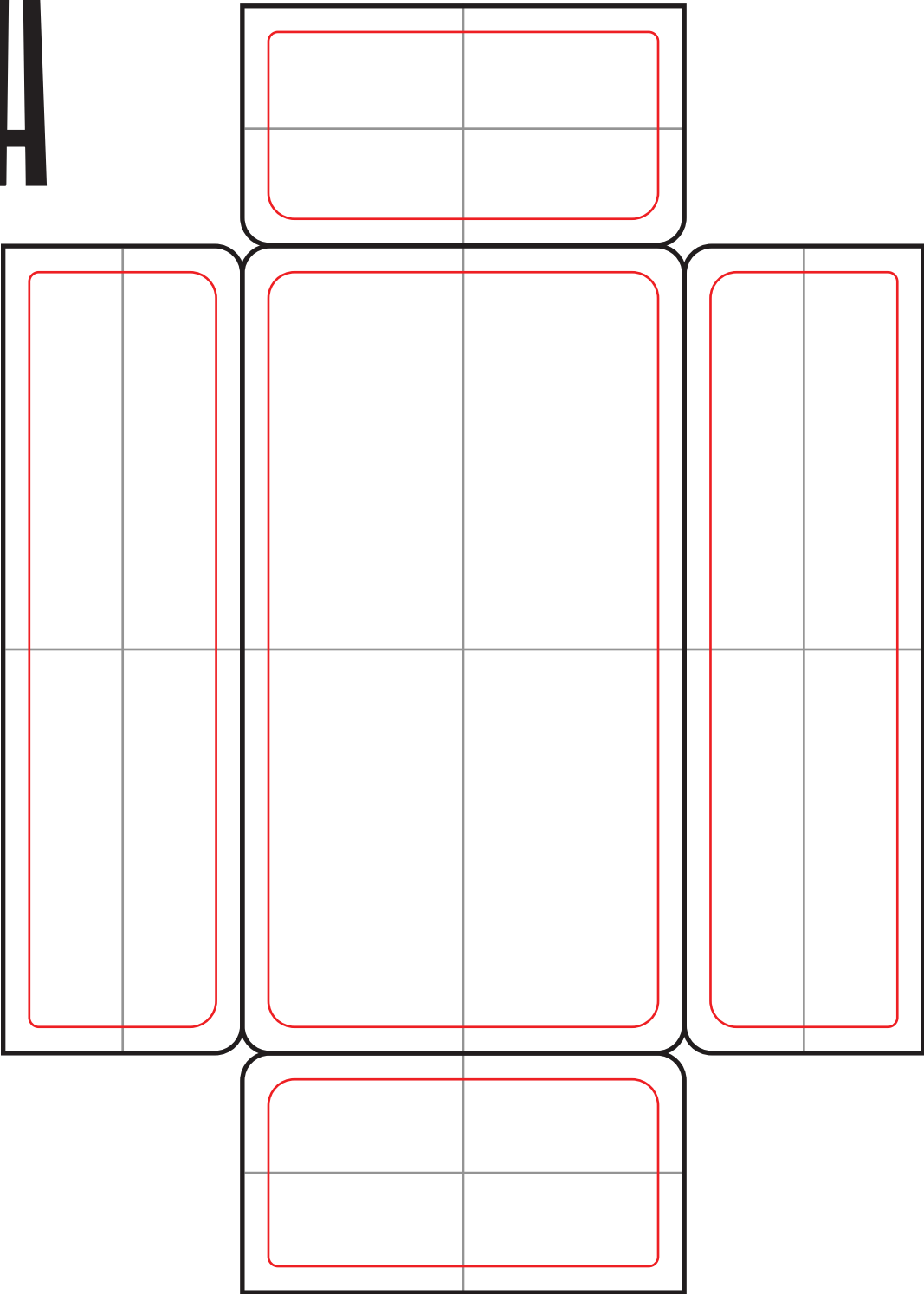




PEDAL NAME:

CLIENT NAME:



### COMMON HOLE SIZES

16mm potentiometer  
9mm potentiometer  
hole size- 0.282.

3mm LED/ no bezel  
hole size- 0.125.

5mm LED/ no bezel  
hole size- 0.197.

5mm LED bezel  
hole size- 0.313.

Mini toggle switch  
hole size- 0.25.

Sub mini toggle switch  
hole size- 0.195.

Footswitch  
hole size- 0.5.

DC jack  
hole size- 0.5.

PCB mount DC jack  
hole size- 0.375.

1/4" jacks  
hole size- 0.375.

Square power jack  
hole size- 0.385 x 0.465.

ALL SIZES LISTED ARE  
COMMONLY USED HOLE  
SIZES FOR EFFECTS PEDALS.  
THERE IS NO GUARANTEE  
THAT YOUR COMPONENTS  
WILL MATCH. SIZES MUST BE  
VERIFIED BY YOU PRIOR TO  
PLACING AN ORDER.

### ART BOUNDRY/NO PRINT

 PRINT AREA

Drill/Print Template ID:

# 125b

Enclosure size

2.63"x4.825"x1.41"

OBSCURAMFG.COM

OBSCURAMFGENCLOSURES@GMAIL.COM

### ARTWORK GUIDELINES

\*\*\*CONVERT ALL FONTS TO OUTLINES\*\*\*

\*\*\*ENCLOSURE SIDES ARE MEASURED FROM CENTER NOT INCLUDING THE LID\*\*\*

\*\*\*VECTOR ART HIGHLY PREFERRED\*\*\*

IF ART CANNOT BE VECTORIZED ENSURE THAT IT IS 300DPI (.JPEG, .TIFF, OR .PDF)