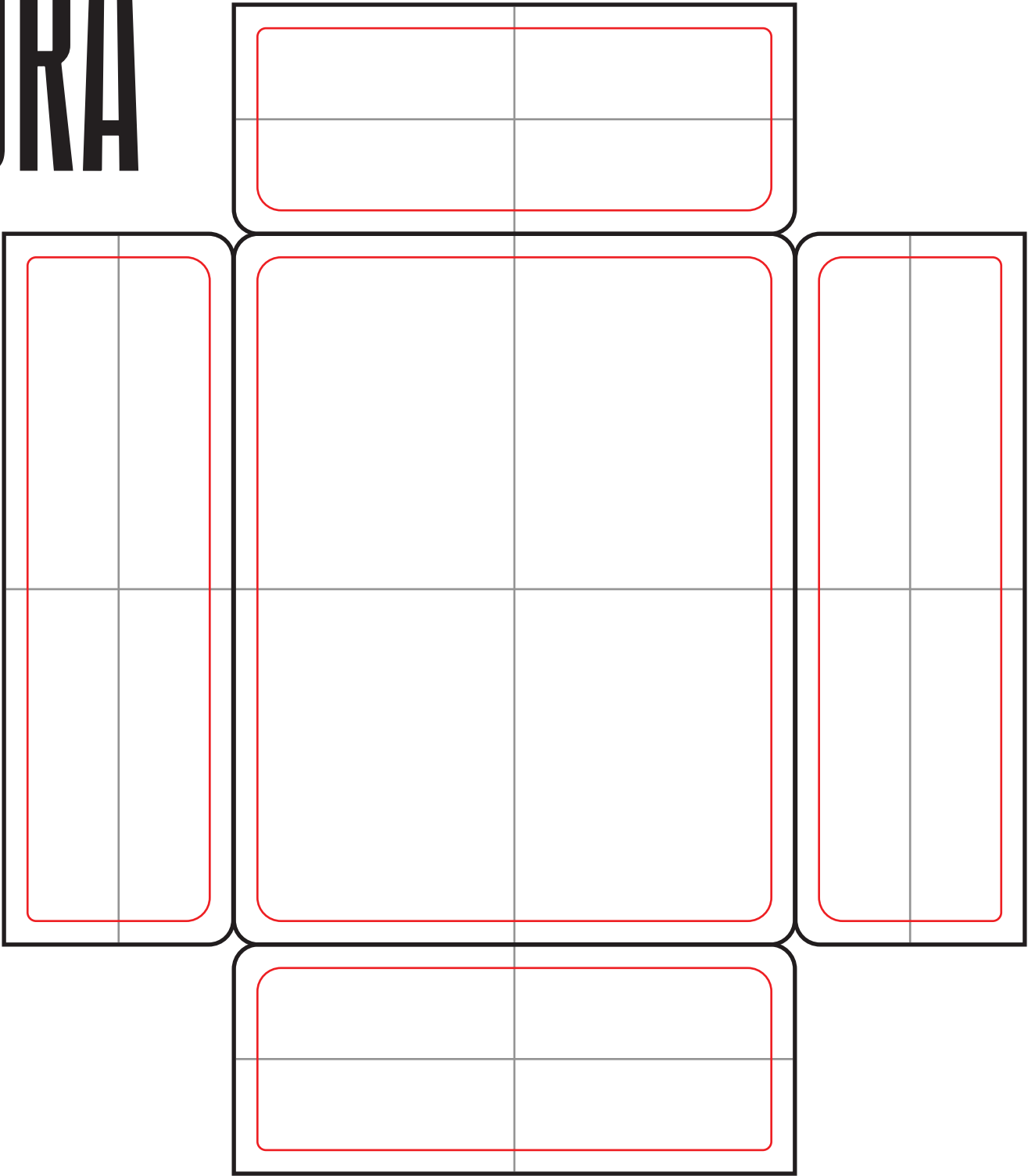




PEDAL NAME:

CLIENT NAME:



COMMON HOLE SIZES

16mm potentiometer
9mm potentiometer
hole size- 0.282.

3mm LED/ no bezel
hole size- 0.125.

5mm LED/ no bezel
hole size- 0.197.

5mm LED bezel
hole size- 0.313.

Mini toggle switch
hole size- 0.25.

Sub mini toggle switch
hole size- 0.195.

Footswitch
hole size- 0.5.

DC jack
hole size- 0.5.

PCB mount DC jack
hole size- 0.375.

1/4" jacks
hole size- 0.375.

Square power jack
hole size- 0.385 x 0.465.

ALL SIZES LISTED ARE
COMMONLY USED HOLE
SIZES FOR EFFECTS PEDALS.
THERE IS NO GUARANTEE
THAT YOUR COMPONENTS
WILL MATCH. SIZES MUST BE
VERIFIED BY YOU PRIOR TO
PLACING AN ORDER.

ART BOUNDRY/NO PRINT

 PRINT AREA

Drill/Print Template ID:

1590BBS

Enclosure size
4.71"x3.71"x1.5"

OBSCURAMFG.COM
OBSCURAMFGENCLOSURES@GMAIL.COM

ARTWORK GUIDELINES

CONVERT ALL FONTS TO OUTLINES

ENCLOSURE SIDES ARE MEASURED FROM CENTER NOT INCLUDING THE LID

VECTOR ART HIGHLY PREFERRED

IF ART CANNOT BE VECTORIZED ENSURE THAT IT IS 300DPI (.JPEG, .TIFF, OR .PDF)